

Product: 30dB Directional Coupler

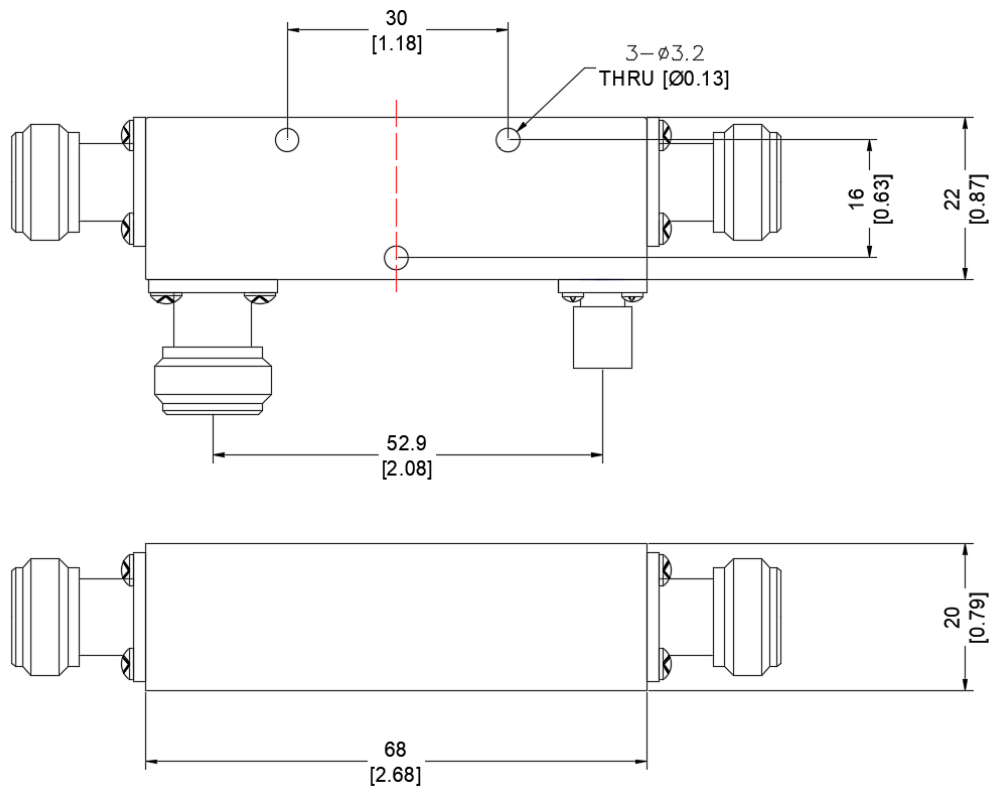
Part Number: LDC-1/6-30N

No.	Parameter	Minimum	Typical	Maximum	Units
1	Frequency range	1	-	6	GHz
2	Nominal Coupling			30±1.	dB
3	flatness	-	±0.7	±1.0	dB
4	Insertion Loss			0.6	dB
5	Directivity	15		-	dB
6	VSWR flatness	-		1.25	-
7	Power		200		W cw
8	Operating Temperature Range	-45	-	+85	°C
9	Impedance	-	50	-	Ω

Outline Drawing:

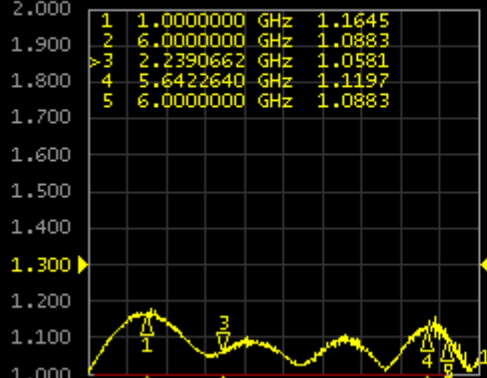
All Dimensions in mm

All Connectors: N-Female



1 Active Ch/Trace 2 Response 3 Stimulus 4 Mkr/Analysis 5 Instr State

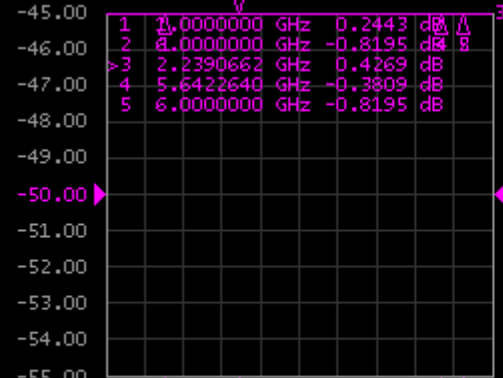
Tr1 S11 SWR 100.0m/ Ref 1.300 [F2]



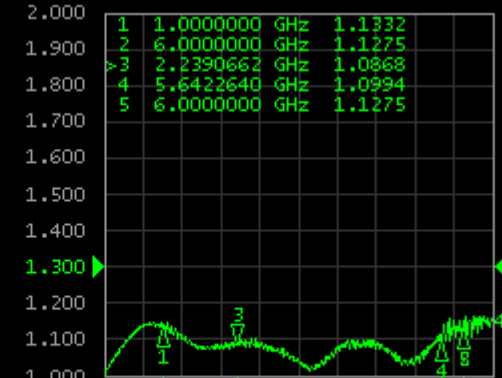
Tr2 S21 Log Mag 1.000dB/ Ref 0.000dB [F2 S



Tr3 S12 Log Mag 1.000dB/ Ref -50.00dB [F2]



Tr4 S22 SWR 100.0m/ Ref 1.300 [F2]



1 Start 1 MHz IFBW 5 kHz Stop 6.5 GHz C?

System

Print

Abort Printing

Printer Setup...

Invert Image
ON

Dump
Screen Image...

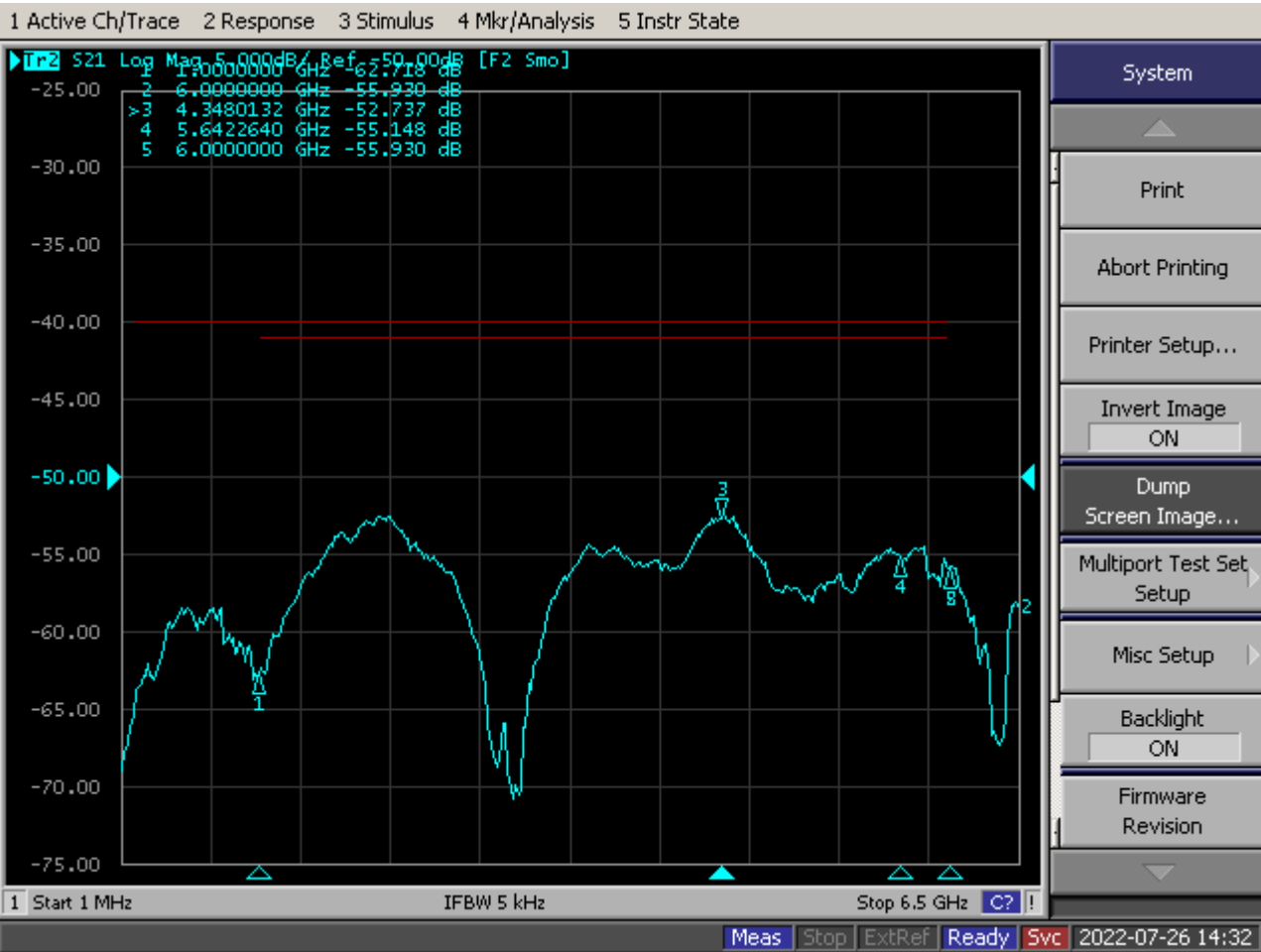
Multiport Test Set
Setup

Misc Setup

Backlight
ON

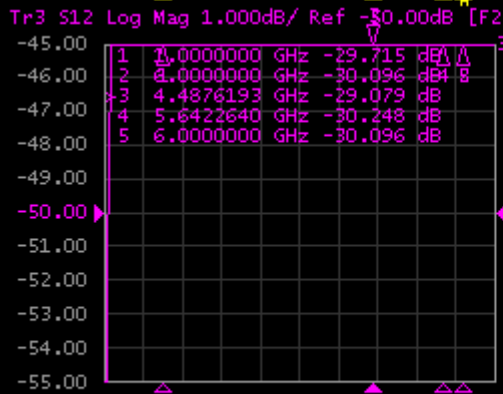
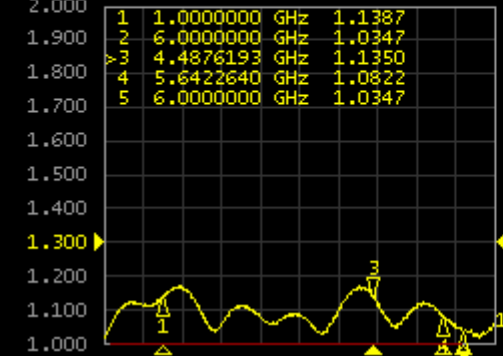
Firmware
Revision

Meas Stop ExtRef Ready Svc 2022-07-26 14:29

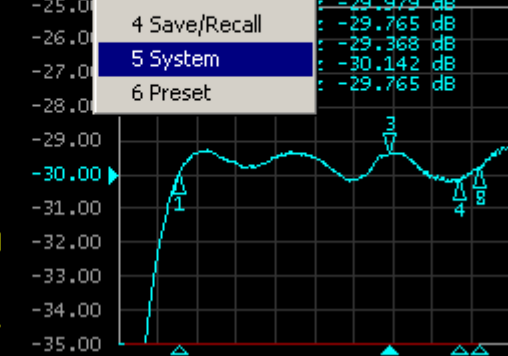


Scale 1 dB/div

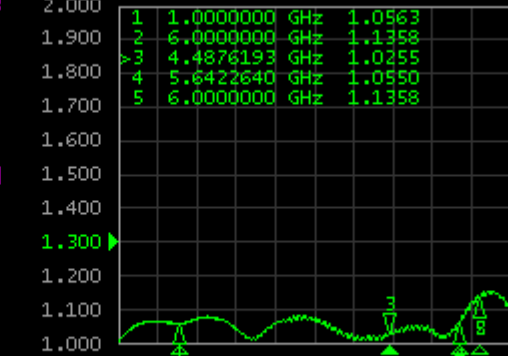
Tr1 S11 SWR 100.0m/ Ref 1.300 [F2]



Tr2 S22



Tr4 S22 SWR 100.0m/ Ref 1.300 [F2]



- 3 Macro Break
- 4 Save/Recall
- 5 System
- 6 Preset

Ref -30.00dB [F2]
-29.979 dB
-29.765 dB
-29.368 dB
-30.142 dB
-29.765 dB

Scale

Auto Scale

Auto Scale All

Divisions

10

Scale/Div

1.0000 dB/div

Reference Position

5 Div

Reference Value

-30.000 dB

Marker ->

Reference

Electrical Delay

0.0000 s

Phase Offset

0.0000 °

Return

1 Start 1 MHz

IFBW 5 kHz

Stop 6.5 GHz